

SmartDrive

# SpeedControl Dial Supplemental Training Guide



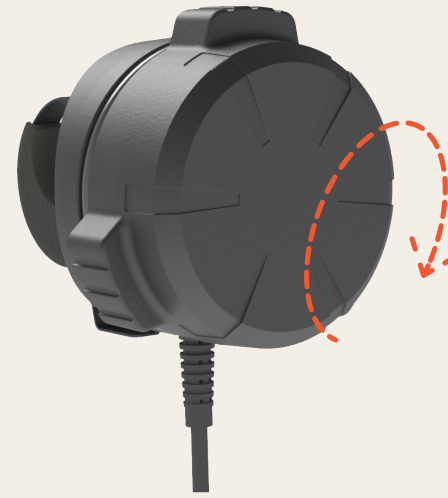
1

Rotate dial to its  
“STOP” limit.



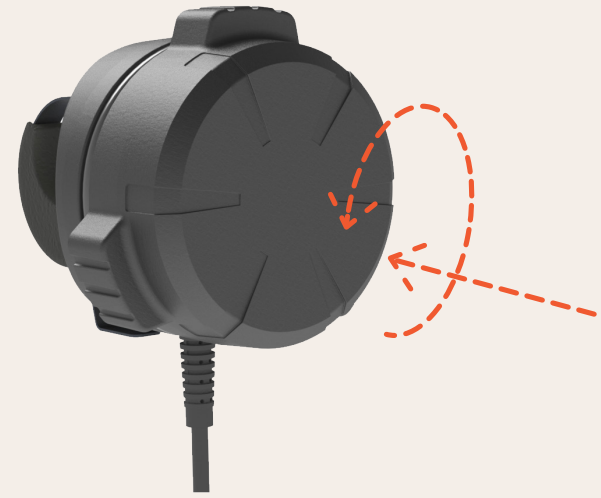
2

Press against face  
of SpeedControl  
until LED turns on.



3

Rotate dial forward until  
you reach desired speed.  
Adjust your speed by  
rotating the dial forward  
or backward.



4

To stop, rotate back to  
“STOP” limit and hold your  
handrims. Press against face  
of the SpeedControl to turn  
power assist off.